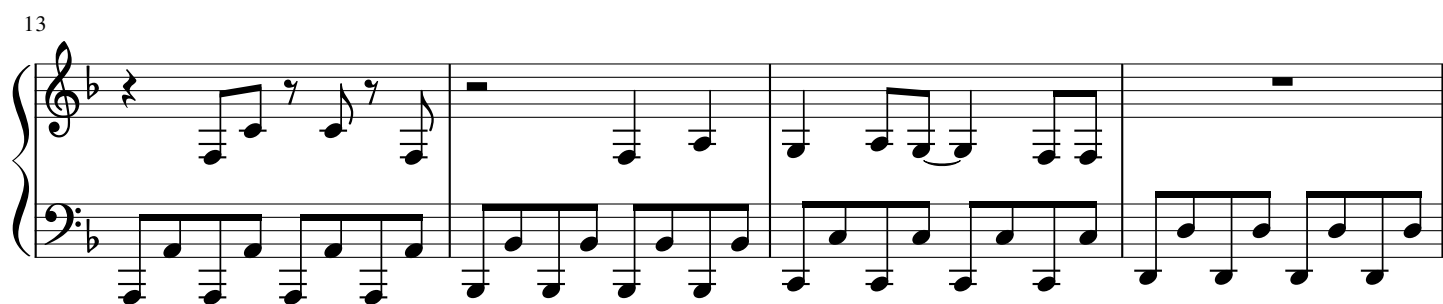
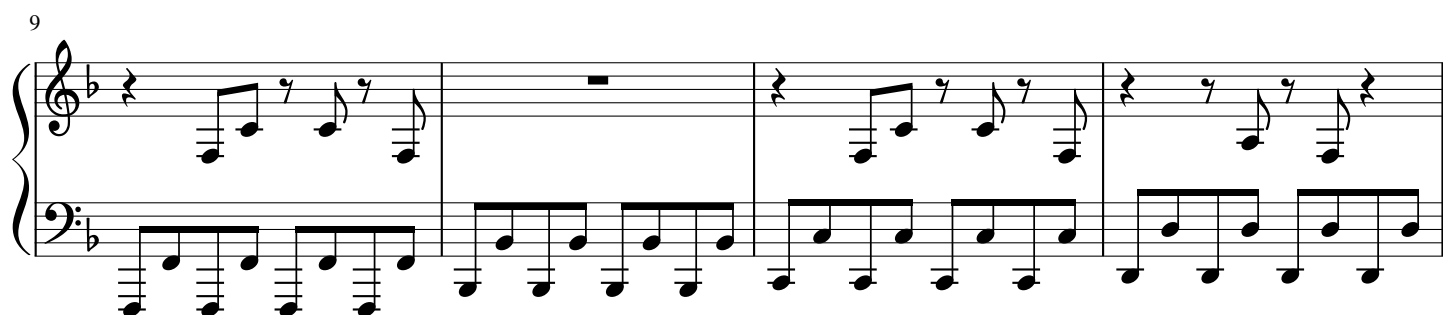
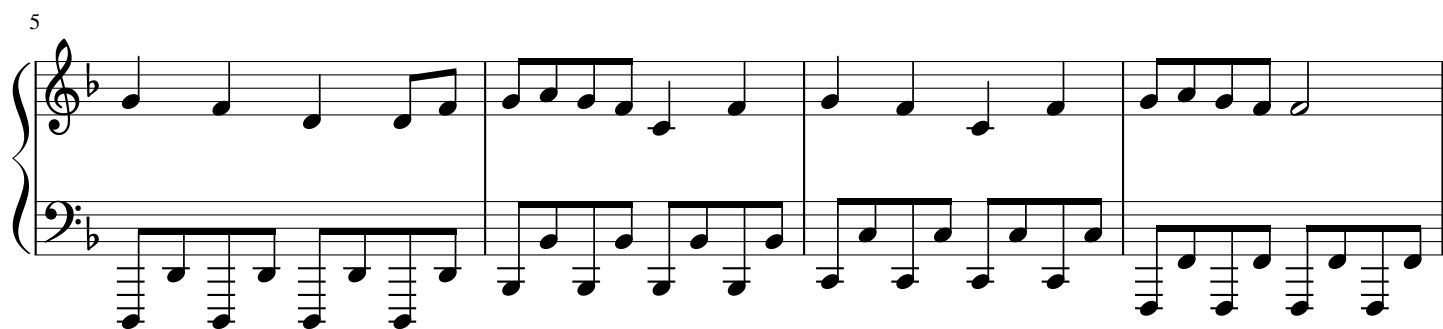
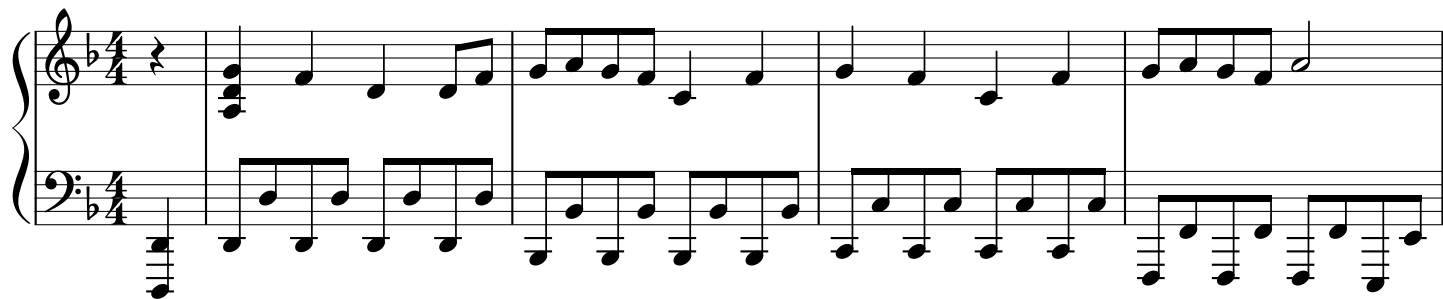


敗北の少年

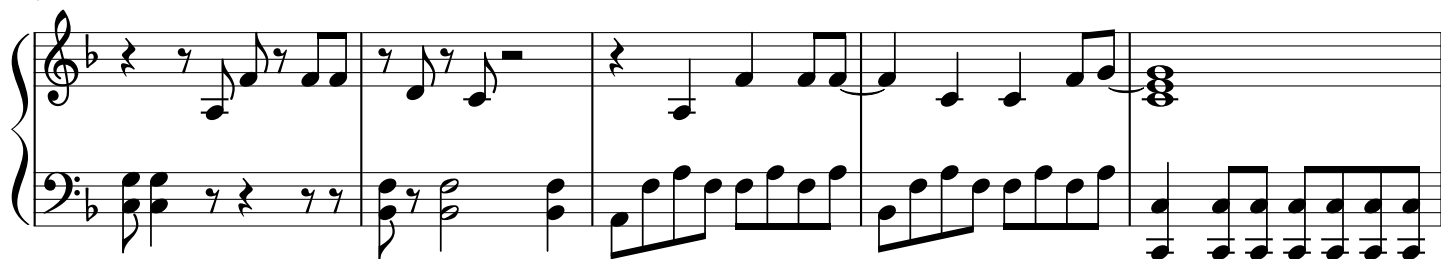
♩ = 180



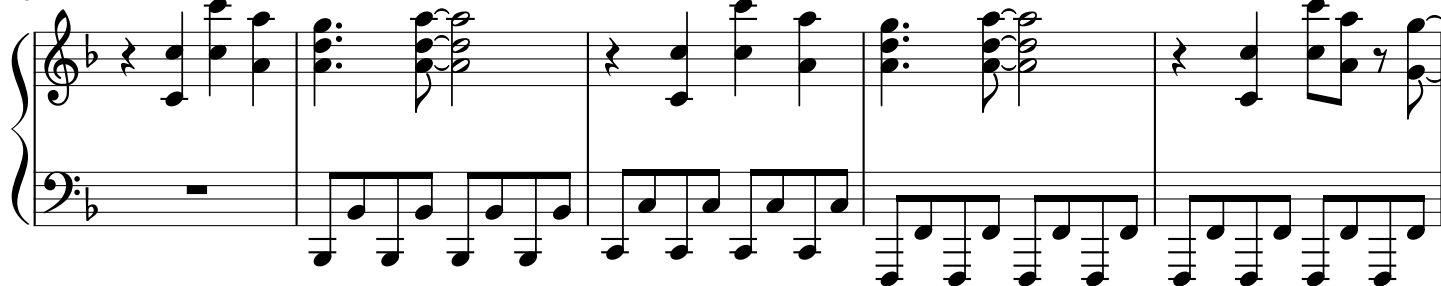
22



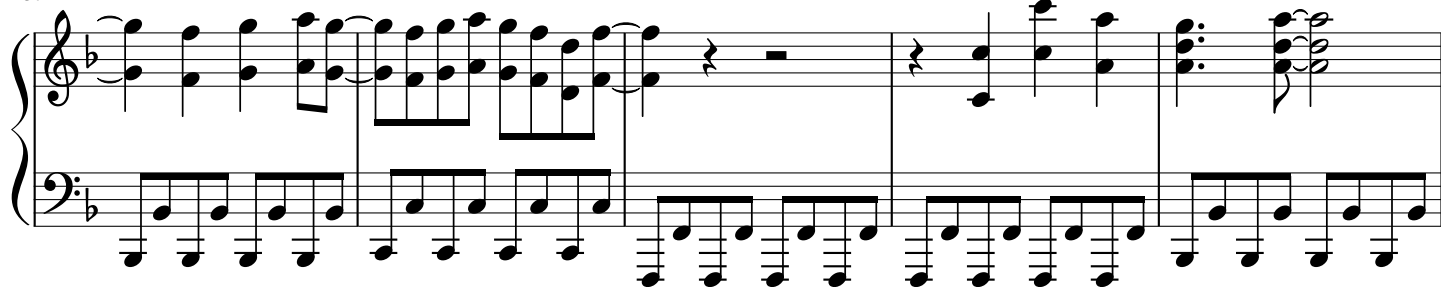
27



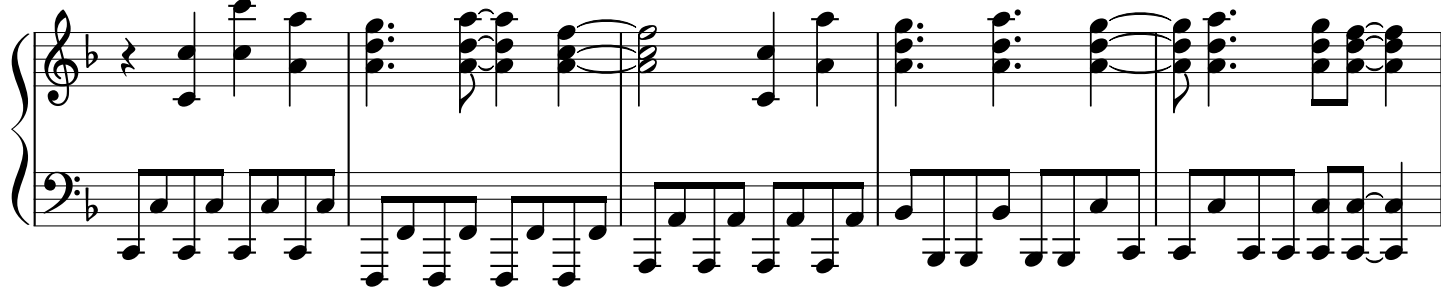
32



37



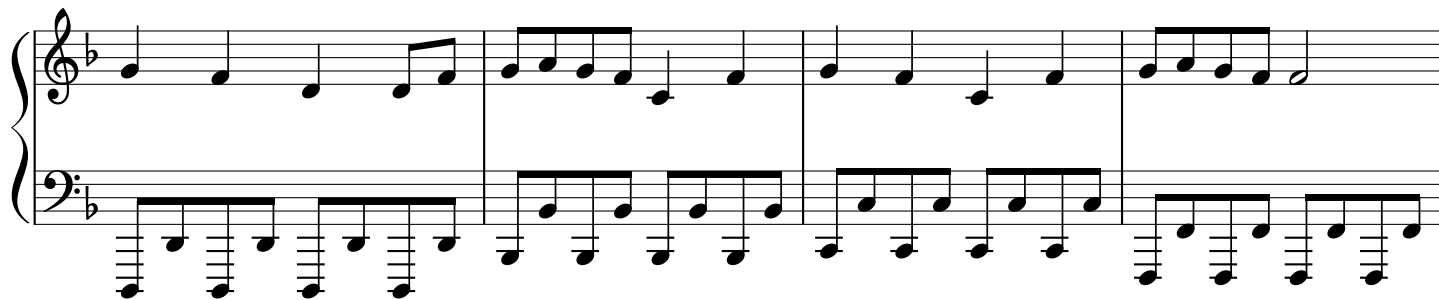
42



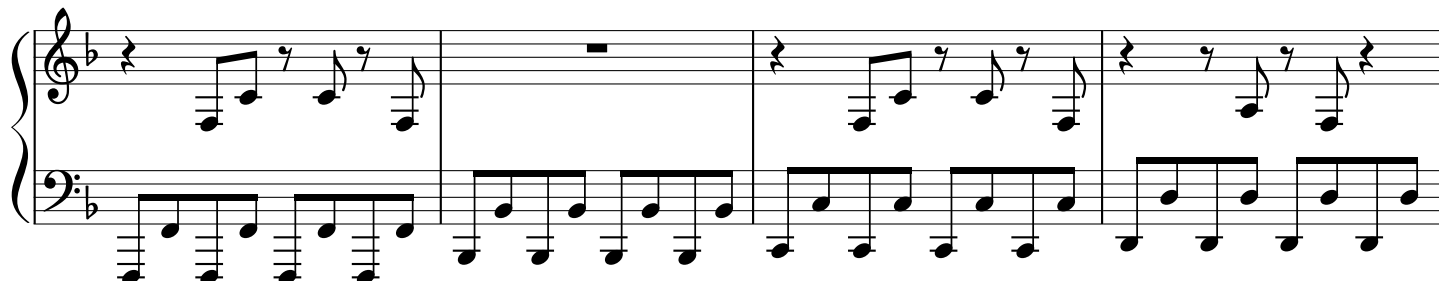
47



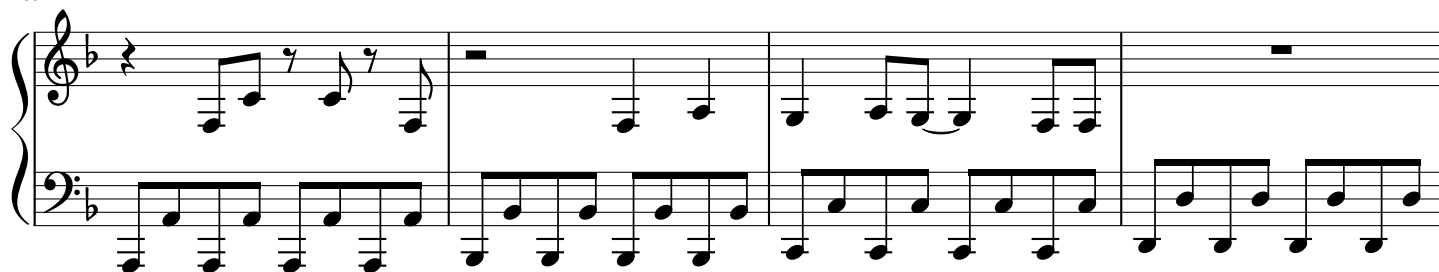
51



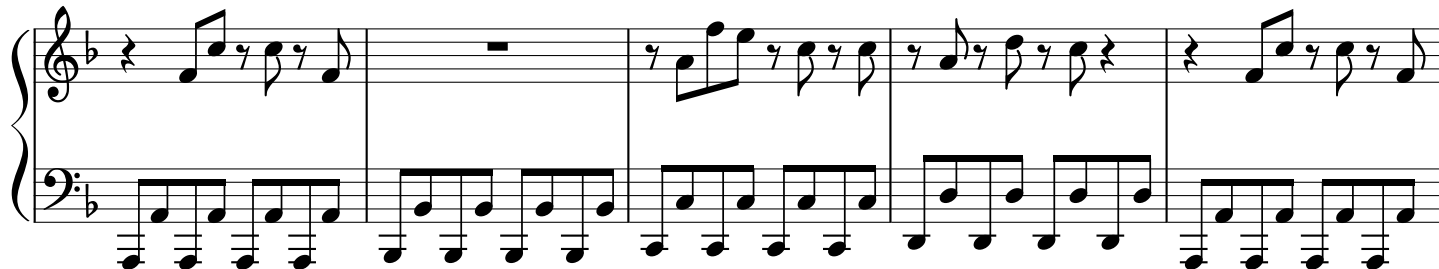
55



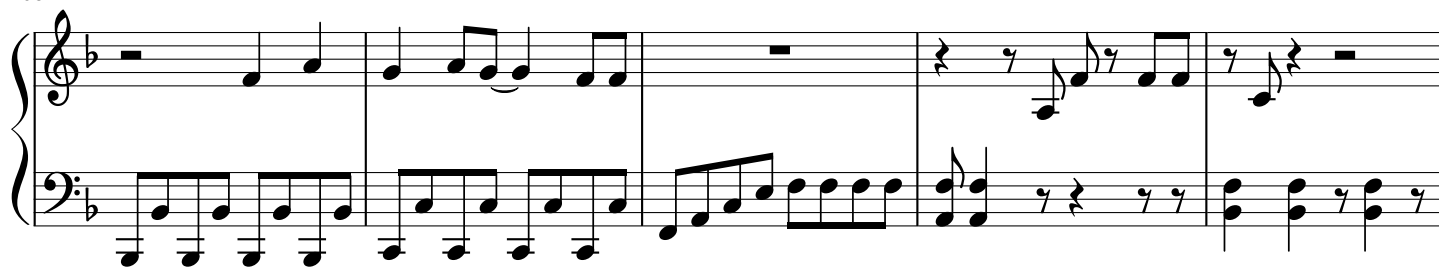
59



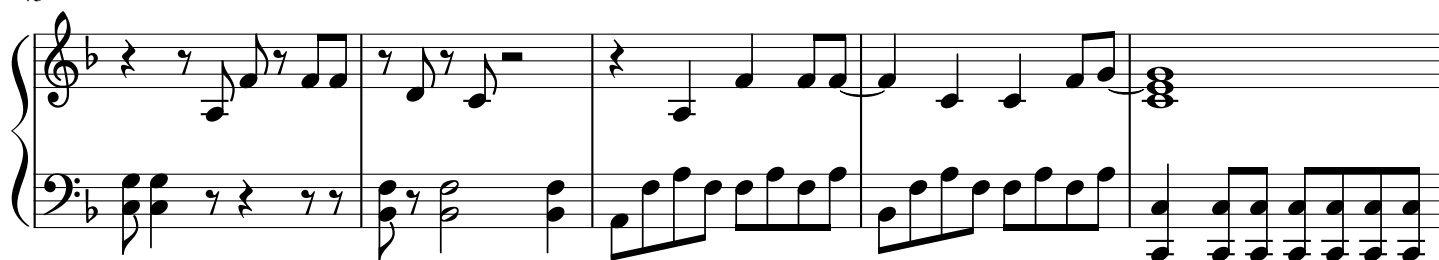
63



68



73



78

Measures 78-82: The right hand begins with a quarter rest, followed by chords and eighth-note patterns. The left hand plays a continuous eighth-note accompaniment.

83

Measures 83-87: The right hand features a more active melody with eighth notes and rests. The left hand continues the eighth-note accompaniment.

88

Measures 88-92: The right hand plays chords and eighth notes. The left hand continues the eighth-note accompaniment.

93

Measures 93-96: This section introduces triplets in both the right and left hands.

97

Measures 97-100: The right hand features chords and eighth notes. The left hand has a more active line with eighth notes and rests.

101

Measures 101-103: The right hand has a complex triplet figure. The left hand continues with eighth notes.

104

System 104-107. Treble clef: measures 104-105 have a whole rest with a fermata; measures 106-107 have eighth-note chords. Bass clef: continuous eighth-note accompaniment.

108

System 108-112. Treble clef: measures 108-110 have eighth-note chords; measure 111 has a half rest; measure 112 has a half note. Bass clef: continuous eighth-note accompaniment.

113

System 113-118. Treble clef: measures 113-114 have eighth-note chords; measure 115 has a half rest; measures 116-117 have eighth-note chords; measure 118 has a whole rest. Bass clef: continuous eighth-note accompaniment.

119

System 119-123. Treble clef: measures 119-120 have eighth-note chords; measure 121 has a half rest; measures 122-123 have eighth-note chords. Bass clef: continuous eighth-note accompaniment.

124

System 124-128. Treble clef: measures 124-125 have eighth-note chords; measure 126 has a half rest; measures 127-128 have eighth-note chords. Bass clef: continuous eighth-note accompaniment.

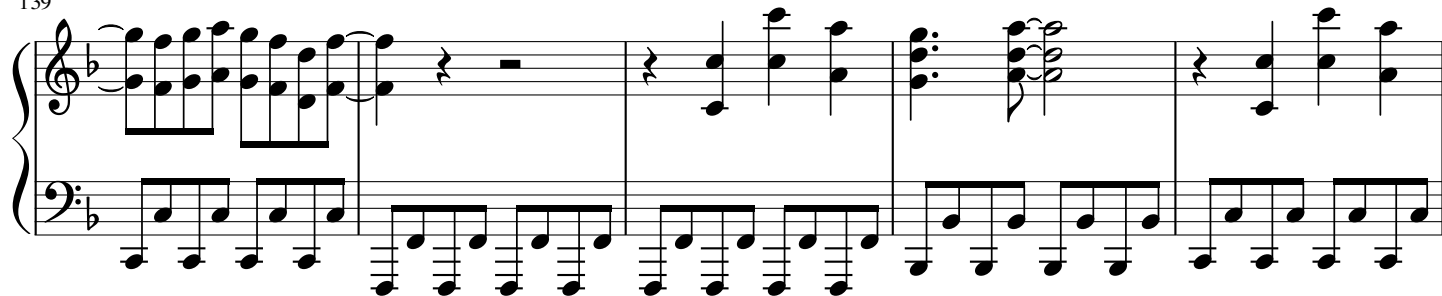
129

System 129-133. Treble clef: measures 129-130 have eighth-note chords; measure 131 has a half rest; measures 132-133 have eighth-note chords. Bass clef: continuous eighth-note accompaniment.

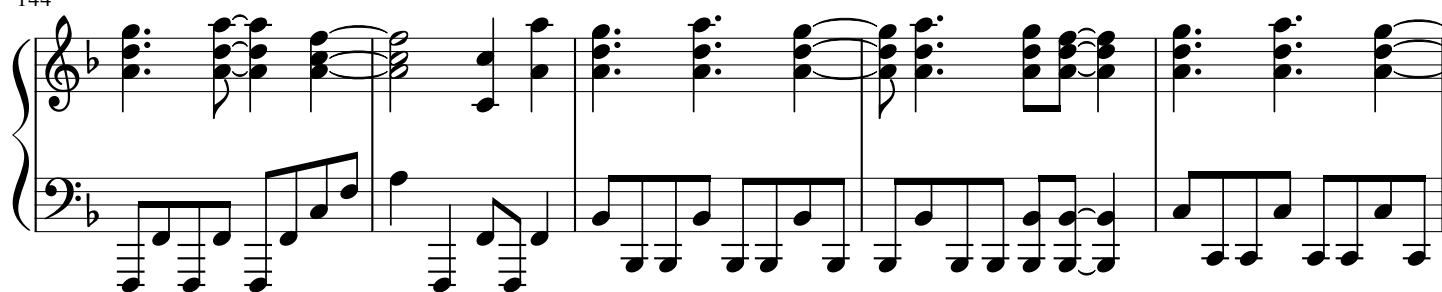
134



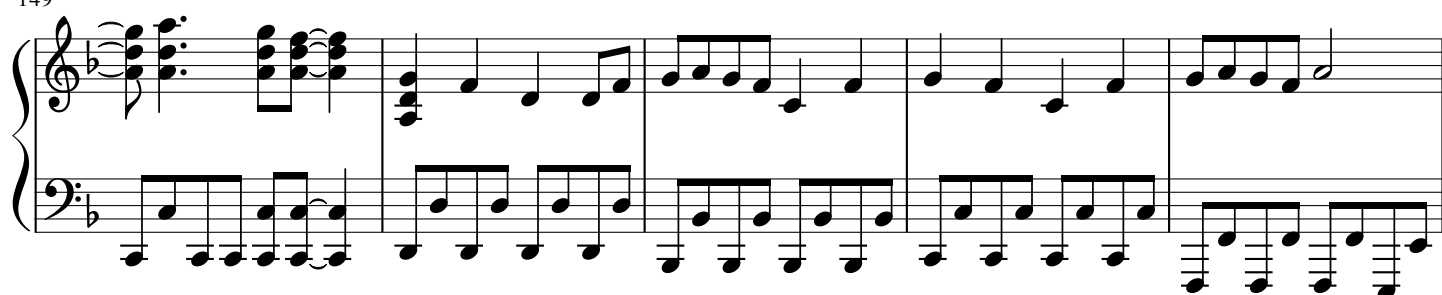
139



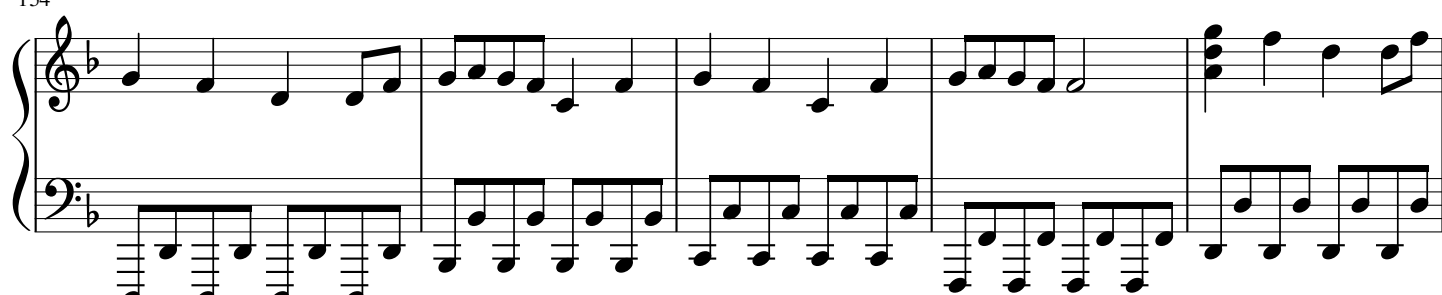
144



149



154



159



163

